

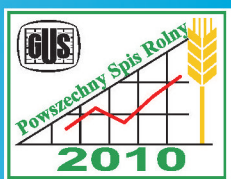


Central Statistical Office
Statistical Office in Rzeszów



MONITORING OF SOCIO-ECONOMIC PHENOMENA IN BORDER AREAS

THE EUROPEAN UNION'S
EXTERNAL BORDER
IN POLAND



Warszawa-Rzeszów 2010



CONTENTS

| | Page |
|--|------|
| I. General information on surveys | 1 |
| II. Preliminary studies | 4 |
| III. Survey reports | 9 |
| IV. Analyses and comprehensive studies | 10 |
| V. Basic methodological information | 12 |

GENERAL INFORMATION ON SURVEYS

After Poland's accession to the European Union, Poland's eastern border became the Community's external border at the same time, thereby gaining special importance. Further enhanced integration was established by Poland's accession to the Schengen zone. On the one hand, Polish citizens were given an opportunity to travel freely within the Schengen area, on the other, Poland was required to seal the eastern border.

Due to integration processes in Europe, statistics of cross-border areas is beginning to play an increasingly important role. It serves to promote regional development and cooperation between countries. Official statistics meets the growing demand for information about cross-border areas. An essential element of the research work on these areas is to create a cohesive information infrastructure.

In the context of new international conditions, particularly the signing of the Agreement between the Government of the Republic of Poland and the Cabinet of Ministers of Ukraine on the principles of local border traffic, the survey of goods and services turnover in border traffic, which was conducted by CSO in 1994-2002, was resumed in 2008. The present methodology was reviewed, modified and adapted to current conditions and needs. The survey was conducted first at the Polish-Ukrainian border, and now covers the entire outer border of the European Union on Polish territory. It is carried out in cooperation with the Border Guard and Customs Service, with support from regional authorities. The CSO Methodological Commission accepted the survey methodology and the Statistical Council recommended it to the Statistical Surveys Programme of Official Statistics. The survey was considered as a priority by the Commission for the Cross-Border Cooperation acting in the Polish-Ukrainian Intergovernmental Coordination Council for Interregional Cooperation during a meeting in Lutsk, in December

GENERAL INFORMATION ON SURVEYS

2008. On the basis of the survey results quarterly reports are compiled. They are published on the website and systematically presented in press conferences of the President of the CSO.

Since March 2008 monitoring of the socio-economic phenomena occurring at the eastern border has been carried out by official statistics. Studies at the border area are also made available on the website of the CSO.

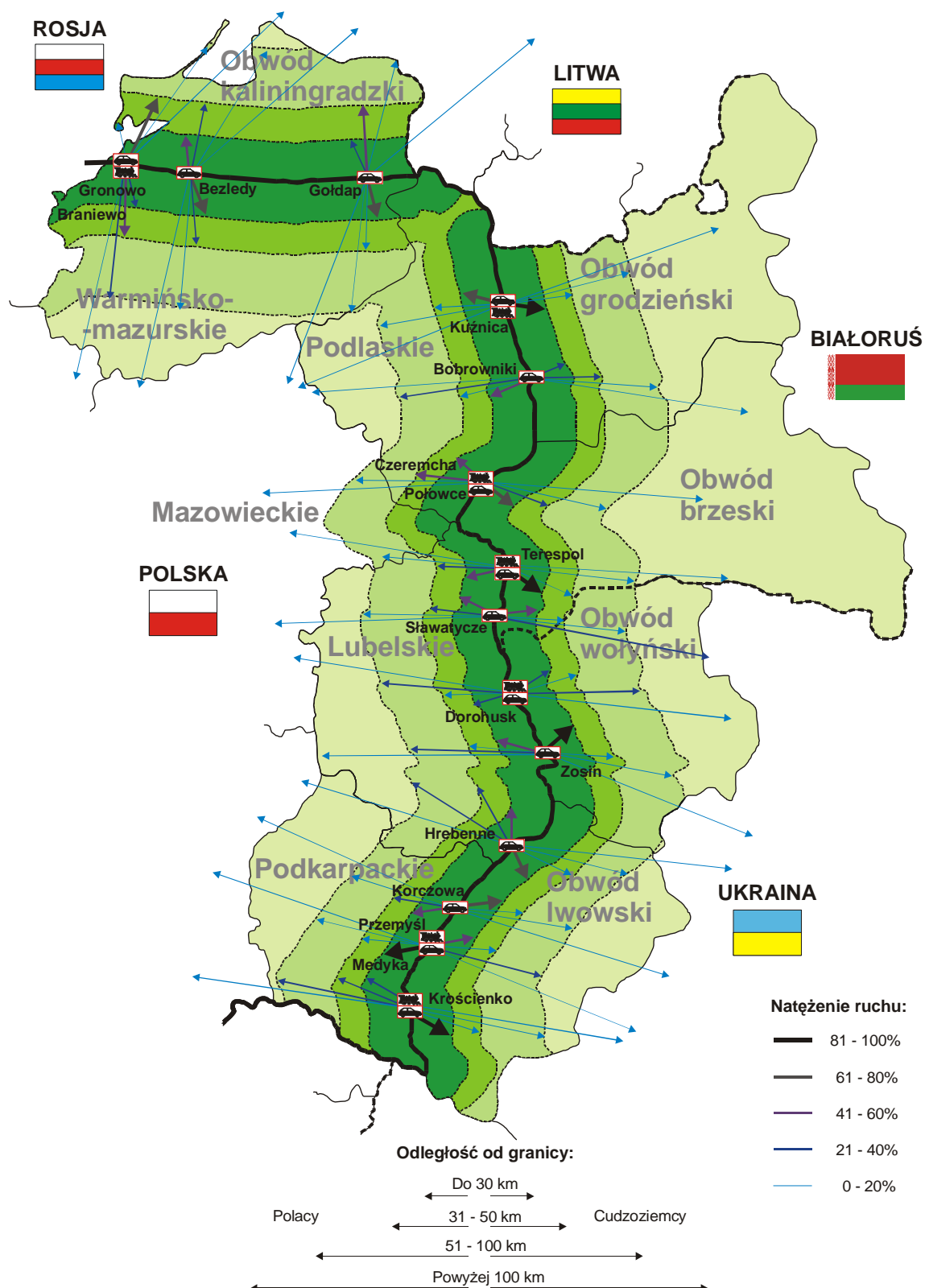
The ongoing research projects are unique as they allow, among other things, for comparisons of the situation in the border areas before and after the introduction of facilitation of crossing the border in the local border traffic.

In order to carry out research of the socio-economic processes occurring in the border regions, in May 2008 the CSO President established the Centre of Transborder Areas Surveys and Statistics for Euroregions within the organizational structure of the Statistical Office in Rzeszów, and in February 2010 the Jerzy Neyman-Spławy Department of Public Statistics Institute was created.

For the purposes of implementing the research work on cross-border areas, international cooperation is being developed and strengthened. Cooperation agreements and letters of intent have been signed between Poland statistics and Ukraine, Belarus and Russia statistics. The willingness to cooperate on joint actions in statistical surveys of areas along the eastern border of the European Union was declared by, among others, representatives of the statistical offices in Kaliningrad, Grodno, Brest, Lutsk, Lviv, Ivano-Frankivsk and Uzhgorod.

GENERAL INFORMATION ON SURVEYS

Delimitation of areas of border impact based on the distance from the border to the place of residence of Poles and foreigners crossing the border



A profile of powiats of the Polish-Ukrainian border area

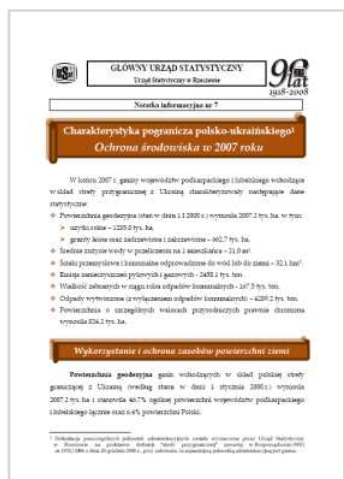
The paper characterizes powiats included in the Polish and Ukrainian border area, and presents mainly data on demographics, labour market, the economy and border traffic. It allows for demonstrating both the similarities and differences in socio-economic development of border areas.

A profile of economic entities registered in the REGON register in the Polish-Ukrainian border area – Podkarpackie and Lubelskie Voivodship

The paper characterizes the national economy entities in the Polish zone bordering with the Ukraine. Information on registered entities is presented taking into account the legal status, type of business as well as the number of employed persons.

Environmental protection in 2007

The overall objective of this paper is to provide the data necessary to assess the state of the environment in the Polish-Ukrainian border area, in particular information relating to natural resources and related issues and environmental threats, as well as water management.



PRELIMINARY STUDIES

State, vital statistics and migration of population in 2007

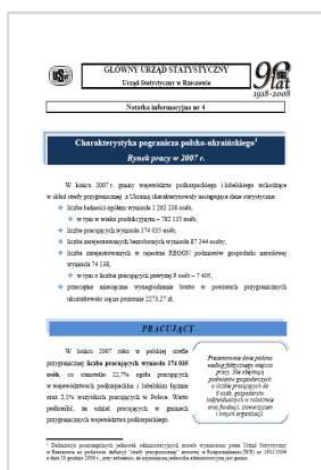
The paper provides much information about the most important demographic phenomena in the Polish zone bordering the Ukraine. It presents, among other things, the number and structure of population, births and deaths, marriages and migration.

Labour market in 2007

The aim of this paper is to provide many details about the labour market in the Polish area bordering the Ukraine and illustrate its specificity. The study provides information on employment by ownership sectors and selected PKD sections, as well as on wages and salaries and the volume of registered unemployment.

Health care in 2007

The paper presents basic data on patient health care, as well as data on pharmacies and pharmacy outlets in the Polish zone bordering the Ukraine. Information on health resort treatment facilities and the people working in health care and social welfare were also presented.



PRELIMINARY STUDIES

Budgets of gminas in 2007

The paper presents data on sources of revenue and expenditure directions of budgets of municipalities and cities with powiat status in the Polish zone bordering the Ukraine according to the types and departments of budget classification.



Tourism in 2007

The study contains data on collective tourist accommodation establishments and the use of these facilities, as well as information about farm tourism and guest rooms. It also contains the characteristics of natural and cultural values of the Polish zone bordering the Ukraine, which is characterized by an abundance of natural conditions and rich architectural heritage.



Budgets of gminas in 2008

The second edition of studies presenting data sources of revenue and expenditure directions of budgets of municipalities and cities with powiat status in the Polish zone bordering the Ukraine according to the types and departments of budget classification.



PRELIMINARY STUDIES

State, vital statistics and migration of population in 2008

The second edition of studies presents the most important demographic phenomena in the Polish zone bordering the Ukraine: structure of population, births and deaths, marriages and migration.



Cross-border surveys at the Polish eastern border

The study contains a brief description of the cross-border areas survey carried out by Statistical Office in Rzeszów. Here, one can find both information about the purpose, subject, survey partners, as well as surveys conducted to date.



The survey of socio-economic phenomena in the border areas in the context of the agreement on local border traffic between Poland and the Ukraine

The overall objective of the paper is to introduce customers to the agreement on local border traffic between Poland and the Ukraine and to the monitoring of socio-economic phenomena for the eastern borderland of Poland. The study also includes information on ongoing research of cross-border areas.

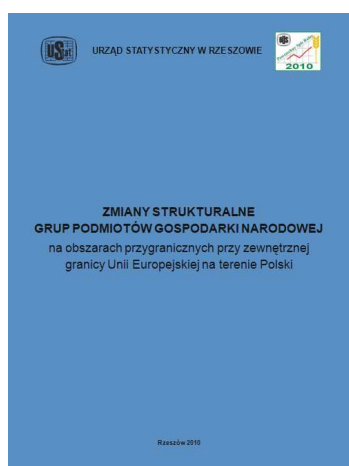


PRELIMINARY STUDIES



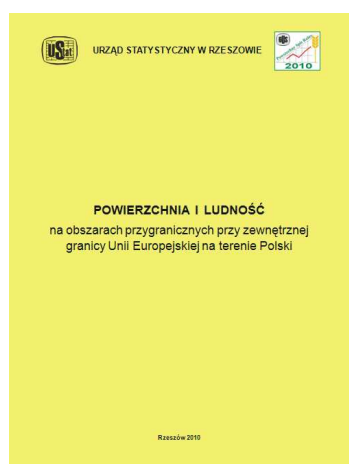
Structural changes of groups of entities of the national economy in the Polish-Ukrainian border area – Podkarpackie and Lubelskie Voivodships

The study containing data on structural changes of entities of the national economy in the Polish-Ukrainian border area. The publication presents, among other things, data on entities by legal form, sections and number of employees.



Structural changes of groups of entities of the national economy located in the border area by the external border of the European Union in Poland

The publication highlights information concerning entities of the national economy by selected legal forms, kinds of activity as well as the number of employed persons in sections including stretches of borders, voivodships, powiats and gminas located in 30-km border zone.



Area and population in the border area by the external border of the European Union in Poland

The publication highlights information concerning the number of population in sections including stretches of borders, voivodships, powiats and gminas located in the 30-km border zone.

SURVEY REPORTS

Starting from the third quarter of 2008, the Central Statistical Office has been carrying out the survey of goods and services turnover in border traffic. The survey was conducted first at the Polish-Ukrainian border, and now also at the border with Belarus and Russia.

The main topic of the survey is the size and structure of expenses incurred by foreigners in Poland and expenses incurred by the Poles abroad. The following is also surveyed: the purpose of travel, distance from the border to the place of residence and the place of purchase, the frequency of crossing the border as well as local border traffic.

The results of the survey of goods and services turnover in border traffic are published in the form of quarterly reports. Reports are presented in press conferences and redistributed to all media in Poland, they also have a permanent place on the CSO news portal. Until now, seven reports have been compiled.



- *A pilot survey of goods and services turnover in border traffic at the Polish-Ukrainian border (from third quarter 2008 to second quarter 2009)*
- *Survey of goods and services turnover in border traffic at the Polish-Ukrainian border in third quarter 2009*
- *Survey of goods and services turnover in border traffic at the Polish-Ukrainian and Polish-Belarusian border in fourth quarter 2009*
- *Survey of goods and services turnover in border traffic at the external border of European Union on the Polish territory in first quarter 2010*



Polish-Ukrainian borderland. Podkarpackie and Lubelskie Voivodship is devoted to issues of cross-border areas. The study contains a general characterization of Podkarpackie and Lubelskie voivodships, focusing on powiats and gminas in the border area. The publication is a wealth of information on, among other things, demographic situation, environmental protection, labour market, marketplaces, education, municipal infrastructure and public finances. The period covered is the year 2006.

Polish-Slovakian-Ukrainian borderland, the publication is devoted to the comparison of social and economic potentials of neighbouring border areas of Poland, Slovakia and the Ukraine. It covers primarily demographic situation, environmental protection, labour market, entities of the national economy, gross domestic product, agriculture and tourism.

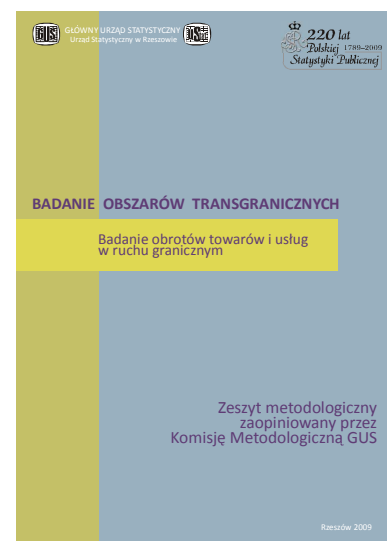


ANALYSES AND COMPREHENSIVE STUDIES



Analysis of socio-economic situation of the Polish-Ukrainian border area issued jointly by the Statistical Office in Rzeszów and the Voivode of Podkarpacie. It presents selected social and economic aspects observed in the Polish-Ukrainian border area, including the impact of factors related to border traffic. The book elaborates on a number of issues relating, among other things, to demographic situation, entities of the national economy, labour market, tourism, environmental protection, health care and gmina budgets.

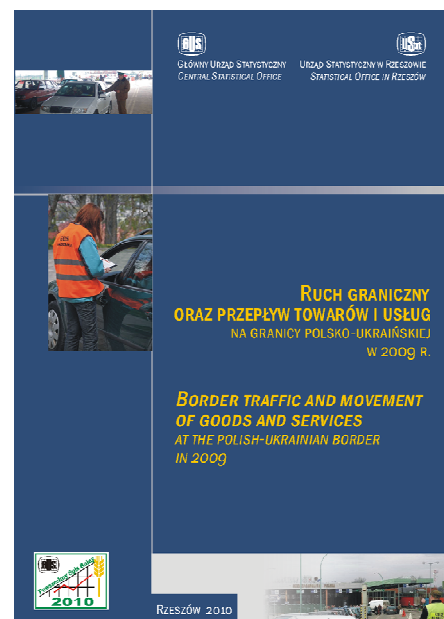
Cross-border areas survey. Survey of goods and services turnover in border traffic. Methodological book approved by CSO Methodological Commission. In 2008, the Centre of Transborder Areas Surveys and Statistics for Euroregions was established in the Statistical Office in Rzeszów. Building a coherent system of research of discussed areas, the Centre initiated a publishing series on the research methodology. This book is dedicated to the survey which main aim is to estimate expenses of foreigners in Poland and Poles abroad crossing the Polish eastern border.



ANALYSES AND COMPREHENSIVE STUDIES

Border traffic and movement of goods and services at the Polish-Ukrainian border in 2009

The publication presents 2009 survey results concerning amount and structure of foreigners' expenses in Poland and Poles' expenses abroad, as well as, among other things, the purpose of stay and the frequency of crossing the border, the distance from the border to the place of residence and the place of purchase, and the small border traffic. It contains the descriptive part, enriched with graphs and maps as well as tables. Date of the edition – June 2010. Format – B5, about 140 pages, price – 25 zlotys.



BASIC METHODOLOGICAL INFORMATION

The survey of goods and services turnover in border traffic at the external border of the European Union on Polish territory is conducted by the Statistical Office in Rzeszów in cooperation with the statistical offices in Lublin, Białystok, and Olsztyn. The survey includes all the road and rail border-crossings with passenger traffic in the voivodships: Podkarpackie, Lubelskie, Podlaskie and Warmińsko-Mazurskie.

The survey provides information on the amount and structure of expenditure incurred by foreigners in Poland and Poles abroad, including expenditure on food and non-food products, accommodation and other services. It covers turnover not

BASIC METHODOLOGICAL INFORMATION

registered on customs declarations. The following is also examined: the purpose of travel, distance from the border to the place of residence and the place of purchase, the frequency of crossing the border, in the case of Poles – the country of stay abroad, in the case of foreigners – country of permanent residence, as well as the possession of the Polish Charter, and persons crossing the border as part of the local border traffic.

The survey covers foreigners leaving Poland (residing permanently abroad) and Poles (residing permanently in Poland) returning to the country by cars, coaches, motorcycles, on foot and by rail. Selected persons crossing the border are surveyed.

The questionnaire is completed for a single person or a homogeneous group of people (e.g. a family) travelling together and incurring expenses together. The survey is anonymous and easy to fill in. Forms for foreigners are prepared in languages: Ukrainian, Russian, English, German and French. The information is collected in the form of an interview or filled in independently by the respondent. The survey is carried out by professional interviewers of official statistics.

The survey is conducted in selected days of the week in such a way that in each quarter, each day of the week occurs once. The value of the expenditure reported by respondents in foreign currencies is converted into pounds sterling at the average exchange rate of the NBP on the day of the survey. The products which are covered by the survey are the one which enjoy the greatest demand among the Poles and foreigners respectively.

In the survey of goods and services turnover in border traffic a two-stage sampling scheme with separate layers was used. First, the days covered by the survey are drawn, then, out of those who cross the border, the persons are drawn.

BASIC METHODOLOGICAL INFORMATION

The layers were separated according to days of the week, border crossings and type of traffic (e.g. Korczowa, road crossing). The survey is conducted on a 1% sample. Data which are used as the basis for estimating the results are data obtained from questionnaires and information of the Border Guard on border traffic at the relevant crossings, including the manner of crossing the border. They include the number of Polish citizens and foreigners crossing the border according to the direction and types of traffic (way of crossing the border) in the surveyed quarter and within 12-hour shifts, during which the survey took place. Data are generalized separately for Poles and foreigners in each layer. The results for the voivodships are calculated on the basis of the results from all layers.

The results of the survey of goods and services turnover in border traffic are also helpful in answering the following questions:

- ❖ Does the phenomena connected with border traffic influence economy and life conditions in border areas, and to what extent?
- ❖ What size is the area influenced by phenomena connected with border traffic?
 - An attempt to delimitate areas under influence of the border.
- ❖ What will be the influence of the entry into force of regulations on small border traffic at external land borders of the European Union in Poland?

Test results are also used to shape regional policy. Information obtained in the survey are used, among other things, by government authorities and local governments in the border regions to formulate the strategy development.

The results are a supplement to statistical information on the official foreign trade turnover on the surveyed sections of the border.



STATISTICAL OFFICE IN RZESZOW

ul. Jana III Sobieskiego 10
35-959 Rzeszów

Front Office

phone: 17 853 52 10, 17 853 52 19;

fax: 17 853 51 57

e-mail: SekretariatUSRze@stat.gov.pl

Director

phone: 17 853 52 10 ext. 311

e-mail: M.Wolan@stat.gov.pl

Centre of Transborder Areas Surveys and Statistics for Euroregions

Manager

phone: 17 853 52 10 ext. 307

e-mail: E.Wojnar@stat.gov.pl

Centre of Regional Research of Podkarpackie Voivodship

Manager

phone: 17 853 52 10 ext. 217

e-mail: T.Krzeminska@stat.gov.pl



<http://www.stat.gov.pl/rzesz>



CENTRAL STATISTICAL OFFICE

Al. Niepodległości 208
00-925 Warszawa

Information Division

phone: 22 608 31 12
fax: 22 608 38 60,
e-mail: dane@stat.gov.pl

Statistical Information Centre

phone: 22 608 31 64-68, 22 608 31 61,
fax: 22 608 38 73,

Dissemination of European statistical data

phone: 22 608 30 57, 22 608 31 57,
e-mail: dane.UE@stat.gov.pl

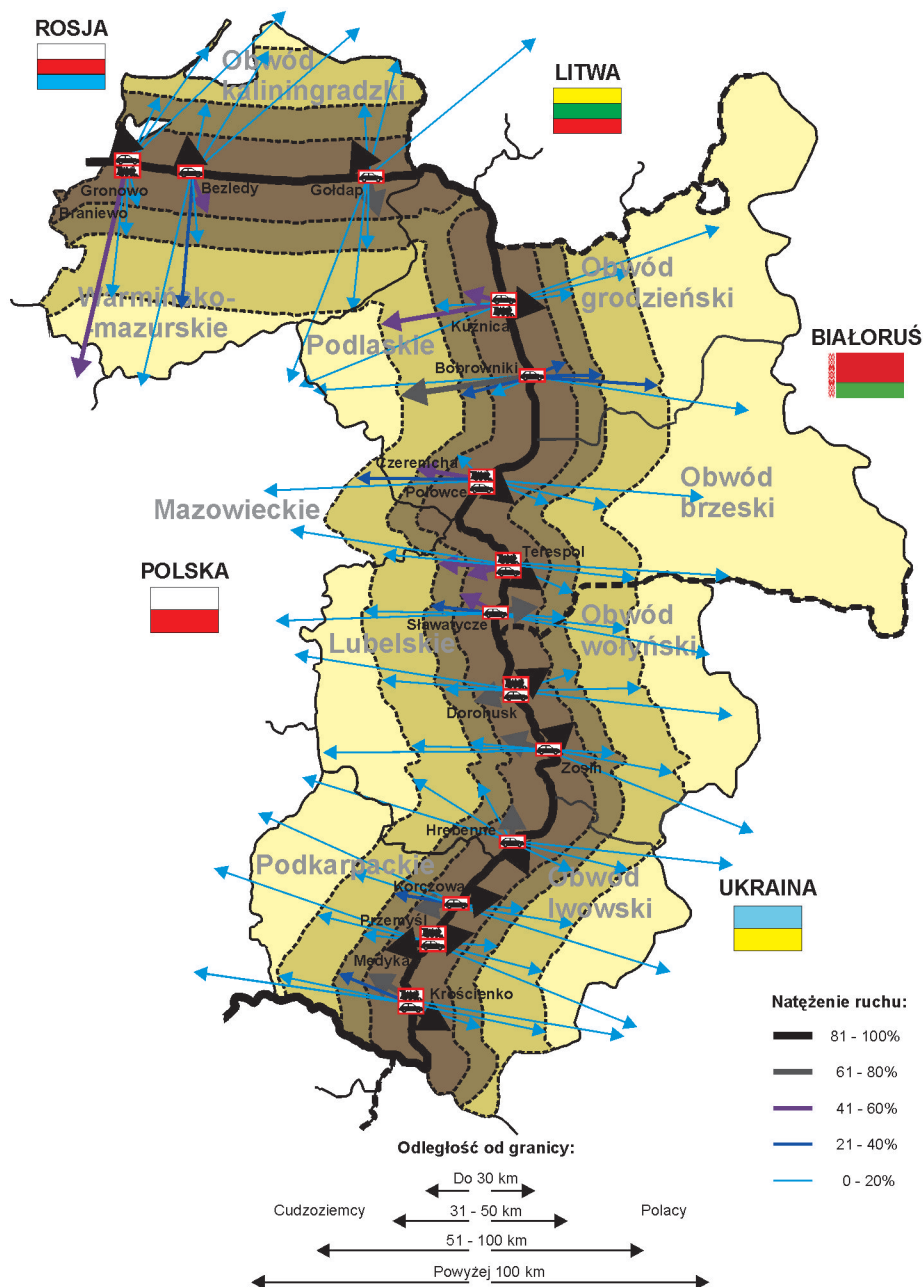
The Spokesman for the President of the CSO

phone: 22 608 30 57,
fax: 22 608 31 87,
e-mail: rzecznik@stat.gov.pl

The screenshot shows the official website of the Central Statistical Office of Poland (GUS). The header includes the GUS logo and navigation links for the main page, contact, and language selection (English). The main content area is titled 'Główny Urząd Statystyczny PORTAL INFORMACYJNY'. It features a sidebar with categories like 'KOMUNIKATY I OŚWIADCZENIA', 'WYNIKI WSTĘPNE', and 'WYKAZNIKI MAKROEKONOMICZNE'. The main body contains several news items, including a statement about the official portal address, a notice about the 2011 population and housing census, and a report on the 11th meeting of the Council of Ministers. The right sidebar lists various services such as 'SPRAWOZDAWCZOŚĆ', 'METAINFORMACJE', and 'PYTANIA I ZAMÓWIENIA'. The footer includes the website URL and a link to the President's Office website.

<http://www.stat.gov.pl>

*Delimitation of areas under the influence of the border
on the basis of distances from the border
to the place of purchase of Poles and foreigners crossing the border*





ISBN 978-83-7406-143-8
